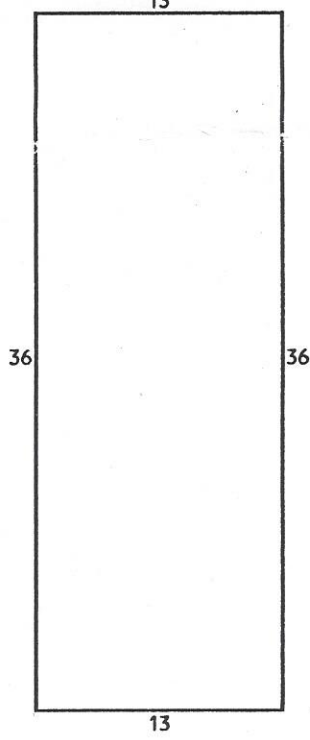
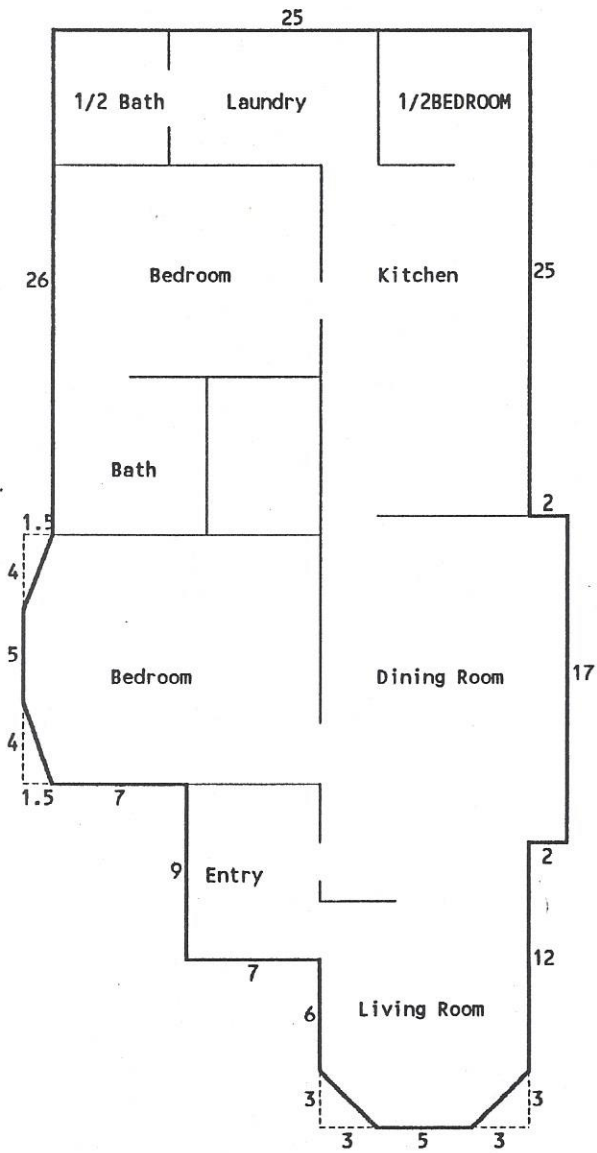


GARAGE



Basement



First Floor*

25	x	25	=	625
1	x	27	=	27
4	x	27.75	=	111
5	x	28.5	=	142.5
4	x	27.75	=	111
3	x	20	=	60
6	x	18	=	108
6	x	11	=	66
3	x	8	=	24

Subtotal* 1274.5 SF

Total* 1274.5 SF

GARAGE

20 x 12 = 240 SF

Basement

36 x 13 = 468 SF

* Total G.L.A. 1274.5 SF

Total OTHER 708 SF